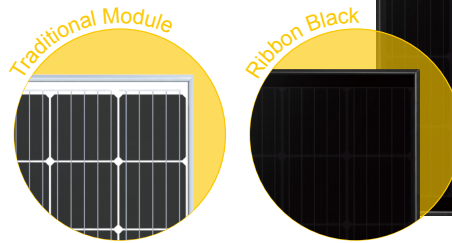
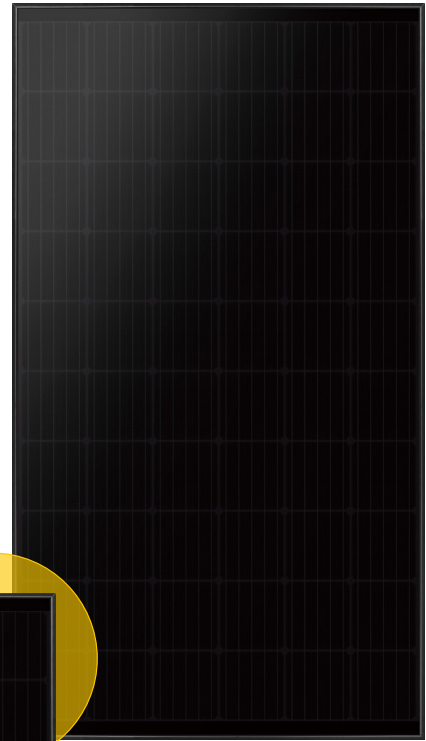


DH-60M Full Black Series 290-310W

Monocrystalline Silicon
Module



Advanced processing techniques realize great module efficiency to a maximum of 19.05%, steady power output guaranteed



0~+5W Positive tolerance delivers higher output reliability



Excellent performance even under low-light settings, such as dawn, dusk and cloudy day

PID

Advanced cell technology and qualified materials lead to high resistance to PID

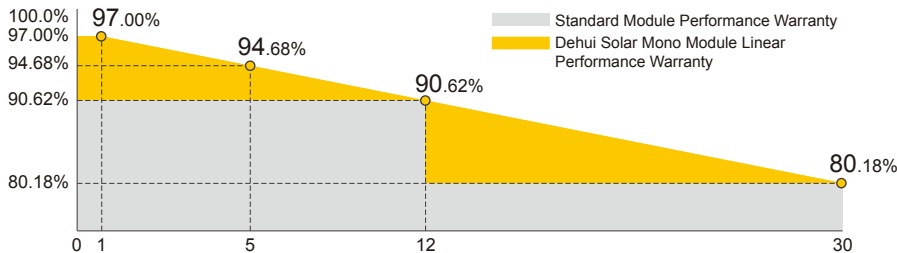


Excellent mechanical load resistance: wind loads (2400Pa) & snow loads (5400Pa)



Reliable quality leads to a better sustainability even in harsh environment like desert, farm and coastline

LINEAR PERFORMANCE WARRANTY



Product Material & Workmanship

12 YEAR WARRANTY

Linear Performance

30 YEAR WARRANTY



DH-60M Full Black Series 290-310W

Monocrystalline Silicon Module

ELECTRICAL PROPERTIES STC*	DH-60M-290	DH-60M-295	DH-60M-300	DH-60M-305	DH-60M-310
Peak Power (Pmax W)	290	295	300	305	310
MPP Voltage (Vmp V)	32.40	32.60	32.90	33.20	33.40
MPP Current (Imp A)	8.96	9.05	9.12	9.20	9.28
Open Circuit Voltage (Voc V)	39.30	39.50	39.70	39.90	40.10
Short Circuit Current (Isc A)	9.46	9.51	9.57	9.63	9.69
Module Efficiency (%)	17.83	18.13	18.44	18.75	19.05
Power Tolerance	0~+5W				
Operating Temperature	-40°C ~ +85°C				
Maximum System Voltage	1500V (IEC)				
Maximum Series Fuse Rating	15A				
Fire Safety	Class C				

*STC (Standard Test Condition): Irradiance 1000W/m², Cell Temperature 25°C, AM 1.5

ELECTRICAL PROPERTIES NOCT*	DH-60M-290	DH-60M-295	DH-60M-300	DH-60M-305	DH-60M-310
Peak Power (Pmax W)	214	217	221	225	229
MPP Voltage (Vmp V)	29.90	30.10	30.30	30.70	31.00
MPP Current (Imp A)	7.17	7.24	7.30	7.34	7.39
Open Circuit Voltage (Voc V)	36.30	36.50	36.70	36.90	37.10
Short Circuit Current (Isc A)	7.65	7.69	7.74	7.79	7.84

*NOCT (Nominal Operating Cell Temperature): Irradiance 800W/m², Ambient Temperature 20°C, AM 1.5, Wind Speed 1m/s

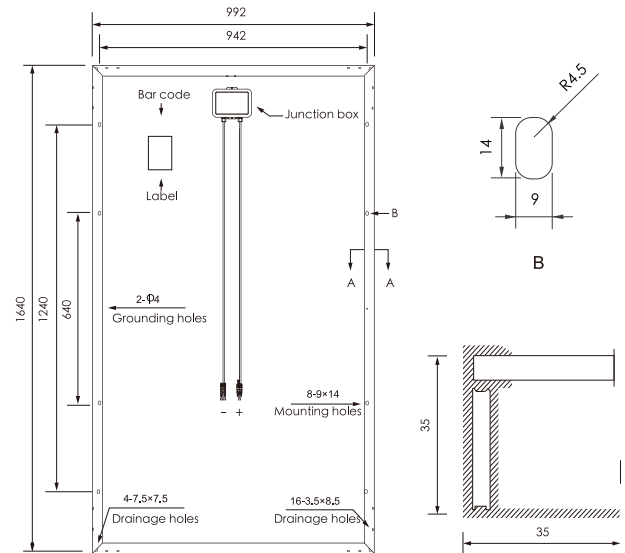
MECHANICAL PROPERTIES	
Cell Type	Mono Cell (156.75 x 156.75mm)
Number of Cells	6 x 10 (60pcs)
Dimension	1640x992x35mm
Weight	18.0kg
Front/Rear Glass	3.2mm Tempered Glass
Frame	Anodized Aluminium Alloy
Junction Box	IP67, 3 Diodes
Cable Type	4.0 mm ²
Length of Cable	1000mm
Connector	MC4 Compatible

TEMPERATURE COEFFICIENT	
Temp. Coeff. of Pmax (TK Pmax)	-0.390%/°C
Temp. Coeff. of Voc (TK Voc)	-0.300%/°C
Temp. Coeff. of Isc (TK Isc)	0.05%/°C
NOCT	45±2°C

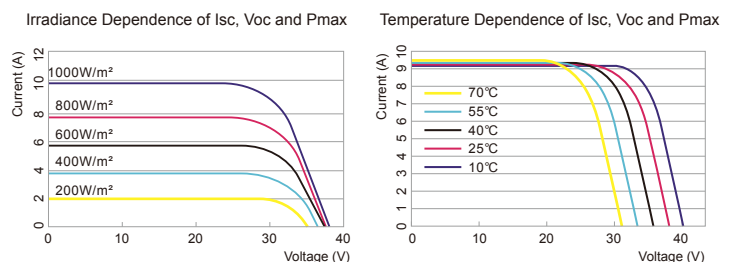
PACKING MANNER		
Packing Type	20GQ	40HQ
Piece/Pallet	30	30+30+6
Pallet/Container	12	14
Piece/Container	360	924

* The specification and key features described in this datasheet may deviate slightly and are not guaranteed. Due to ongoing innovation, R&D enhancement, Dehui Solar reserves the right to make any adjustment to the information described herein at any time without notice. Please always obtain the most recent version of the datasheet which shall be duly incorporated into the binding contract made by the parties governing all transactions related to the purchase and sale of the products described herein.

ENGINEERING DRAWING (unit: mm)



I-V CURVES



Tel: +86 510 8855 9088
 Fax: +86 510 8815 6008
 Email: sales@dehui-solar.com

China Office: 28F, #1 Building, Hang Lung Plaza, Wuxi, Jiangsu Province, China
 Germany Office: Sebastian-Kneipp-Str.41 60439 Frankfurt, Germany
 Vietnam Factory: Dai Dong-Hoan Son Industrial Zone, Bac Ninh Province, Vietnam

DEHUI SOLAR
 S H A R E V A L U E